

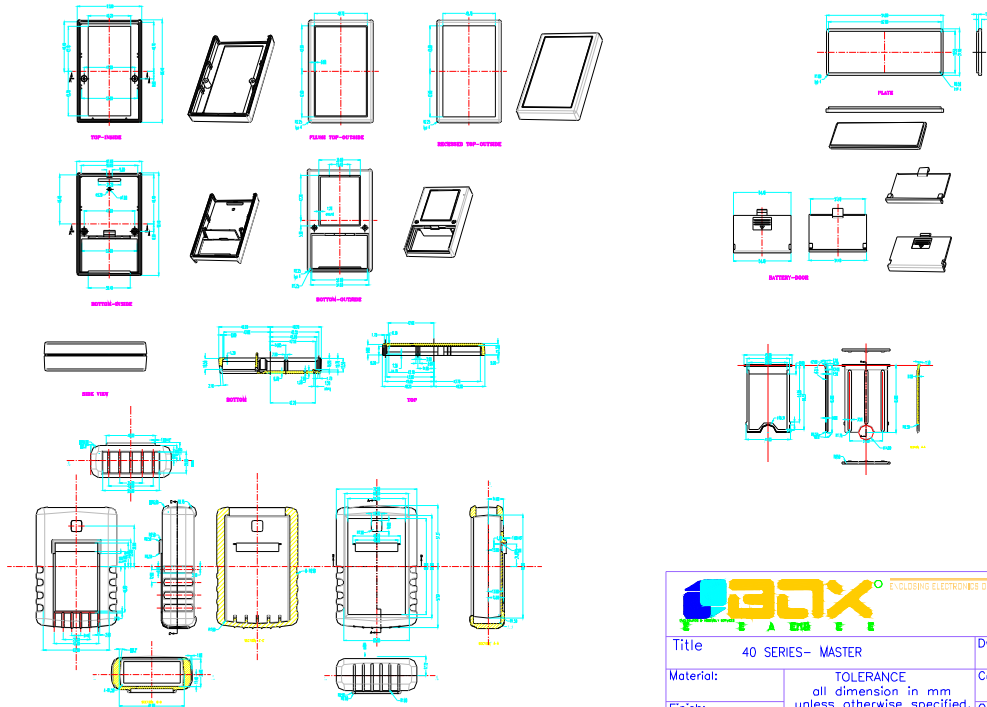


ENCLOSING ELECTRONICS ONE BOX AT A TIME


BOX ENCLOSURES, INC

28835 N. HERKY DRIVE, #114,
LAKE BLUFF, IL 60044

TEL: 847-932-4700 WWW.BDXENCLOSURES.COM FAX: 847-932-4701



THIS DRAWING IS THE PROPERTY OF AND MAY EMBODY PROPRIETARY INFORMATION OWNED BY BOX ENCLOSURES, INC. IF IT IS PROVIDED UNDER A CONFIDENTIAL RELATIONSHIP FOR A SPECIFIC PURPOSE, THE RECIPIENT AGREES TO USE IT ONLY FOR SUCH PURPOSE AND RETURN IT TO BOX ENCLOSURES UPON REQUEST.

 ENCLOSING ELECTRONICS ONE BOX AT A TIME		Revision:	
Title		Dwg. No.:	Port No.:
Material:	40 SERIES- MASTER	Color:	Drn. Date R.F.K. 12-13-01
Finish:	TOLERANCE all dimension in mm unless otherwise specified.	Qty:	Chk. Date
Proj.:	x ±0.20 .x ±0.10 .xx ±0.05 ANGLE ±0.5°	A1	App. Date
		Sheet	1 of 1